

Bachelor Gulch Village Association- Emergency Action Plan		
	User Group:	Responder
	Access Level:	
	Code / Title:	Community Evacuation Plan
	Authorized by:	
	Last Revision Date: April 01, 2009	FINAL

Bachelor Gulch Village Association Evacuation Plan

1	Scope	Page 2
2	Purpose	Page 2
3	Organizational Structure	Page 2
4	Incident Assessment	Page 3
5	Plan Activation Procedure	Page 5
6	Communications	Page 6
7	Neighborhood Control Grids	Page 10
8	Transportation	Page 13
9	Rescue Situations	Page 16
10	Implementation of the Evacuation Plan	Page 16
11	Relocation Centers	Page 24
12	Secondary Evacuation Routes	Page 25
13	Rescinding of Evacuation Orders	Page 28
14	Appendix	Page 31

Bachelor Gulch Village Association- Emergency Action Plan		
	User Group:	Responder
	Access Level:	
	Code / Title:	Community Evacuation Plan
	Authorized by:	
	Last Revision Date: April 01, 2009	FINAL

1) Scope

This community evacuation plan is for the residents, guests, business owners, employees, and vendors who reside in or visit Bachelor Gulch.

2) Purpose

This plan is designed to ensure an orderly, effective, and efficient evacuation of human life from Bachelor Gulch in the event of human initiated and natural disasters. The plan may be partially or fully implemented based on the nature and magnitude of the emergency incident threatening the community. Depending on the nature of the emergency the evacuees may be directed to a) protect in place, (stay within a building for protection), b) move to safe zone within the community (relocated to a public protection area such as a Hotel), or c) leave the community and check in at designated location.

In some instances, individual components of this plan may be implemented to assist in the protection of property and to provide emergency response personnel with real time information regarding the population within the community.

3) Organizational Structure

- a) As required under Homeland Security Presidential Directive (HSPD)-5, Unified Command requires that all emergency agencies public and private have a stake in the decision process during an emergency
- b) The Bachelor Gulch Public Safety Department participates in the use of the National Incident Management System (NIMS)

Bachelor Gulch Village Association- Emergency Action Plan		
	User Group:	Responder
	Access Level:	
	Code / Title:	Community Evacuation Plan
	Authorized by:	
	Last Revision Date: April 01, 2009	FINAL

- c) Within the NIMS program there are two types of Command Structures
 - i) *Single Command – for use where a single agency has jurisdiction for the incident*
 - ii) *Unified Command – for use where multiple agencies have jurisdiction for the incident*
- d) The Bachelor Gulch Public Safety Department may activate the Community Evacuation Plan as necessary under either the Single Command and / or the Unified Command Structure

4) Incident Assessment

- a) An assessment of the initiating cause for the evacuation shall be made prior to implementing the alerting steps of this plan, for the public. The decision to evacuate a portion or all of Bachelor Gulch will be made in conjunction with:
 - i) *Bachelor Gulch Public Safety Director*
 - ii) *Eagle County Sheriff I.C. Commander*
 - iii) *ERFPD I.C. Commander*
- b) The following factors should be reviewed
 - i) *Nature of threat and validity of threat*
 - ii) *structure fire*
 - iii) *wildfire*

Bachelor Gulch Village Association- Emergency Action Plan		
	User Group:	Responder
	Access Level:	
	Code / Title:	Community Evacuation Plan
	Authorized by:	
	Last Revision Date: April 01, 2009	FINAL

- iv) hazardous materials release*
- v) bomb threat*
- vi) terrorism*
- vii) severe winter threat*
- viii) contaminated water supply*
- c) Magnitude of the threat
 - i) Effect will be within one control grid*
 - ii) Effect will be within 1 to 3 control grids*
 - iii) Effect is community wide*
- d) Form of hazard to the public
 - i) Inhalation hazard*
 - ii) Thermal hazard*
 - iii) Explosive / shock wave hazard*
 - iv) Toxicity other than inhaled*
- e) Threat mobility
 - i) stationary*
 - ii) moving 1- 2 mph*
 - iii) moving 3 - 5 mph*

Bachelor Gulch Village Association- Emergency Action Plan		
	User Group:	Responder
	Access Level:	
	Code / Title:	Community Evacuation Plan
	Authorized by:	
	Last Revision Date: April 01, 2009	FINAL

iv) moving 5 – 10 mph

v) moving over 10 mph

f) An assessment of the immediately available staffing resources shall be performed

i) Move personnel into involved Control Grids with due regard to officer safety

ii) If vehicles do not have evacuation signs, load vehicles before responding into area of concern

5) Plan Activation Procedure

a) All activations of this plan shall be approved by the Public Safety Director, Bachelor Gulch Village Association Director.

b) Depending upon the emergency, immediate closure of the entrance points to the community or affected areas of the community to non emergency vehicles may be necessary. This will require the assignment of supervisory personnel at the control points (as defined on pages 5 & 6) closest to the affected area.

c) Notifications

i) The follow entities shall be notified immediately upon the activation of this plan

(1) Bachelor Gulch Public Safety Director

(2) Village Resort Operations on Duty Manager

Bachelor Gulch Village Association- Emergency Action Plan		
	User Group:	Responder
	Access Level:	
	Code / Title:	Community Evacuation Plan
	Authorized by:	
	Last Revision Date: April 01, 2009	FINAL

- (3) Mountain on Duty Manager*
- (4) Vail Resort Chief Operating Officer*
- (5) All off duty Public Safety Officers – report for duty*
- (6) Executive Director of the Bachelor Gulch Village Association*
- (7) General Manager of the Bachelor Gulch Metro District*
- (8) Eagle County Sheriff’s Office*
- (9) Eagle River Fire Protection District*
- (10) Eagle County Emergency Management Agency*
- (11) Eagle County Health Service District*
- (12) Shuttle Transportation Service*
- (13) Advise all on duty Public Safety Officers to prepare the Emergency Evacuation signs and equipment required to implement this procedure*

6) Communications

a) To the Public

i) *Emergency Alerting Systems*

(1) Bachelor Gulch Emergency Alerting System (Red Phone)

(a) Bachelor Gulch maintains an emergency homeowner communication data base and notification system

Bachelor Gulch Village Association- Emergency Action Plan		
	User Group:	Responder
	Access Level:	
	Code / Title:	Community Evacuation Plan
	Authorized by:	
	Last Revision Date: April 01, 2009	FINAL

(RedPhone™). This data base allows the community to provide evacuation information via telephone, email, and text messaging by individual Control Grid location(s) as well as follow up instructions for reentering the community.

(b) Contact numbers / addresses may be from any location, including out of state.

(2) Emergency Alerting System (EC Alert)

(a) Eagle County has an emergency alert system that allows homeowners to register cell phones as well as land lines for emergency notification.

ii) Cable Television Channel (Vail TV-Channel 8)

(1) Should an emergency be of a prolonged nature Bachelor Gulch will provide further information on the local Channel 8 radio station.

(a) Pre-recorded announcements

(b) Ad-hoc announcements

(c) Text crawler

iii) Eagle County E-Alert 911 system

(1) Eagle County and the local emergency agencies depend upon the local reverse 911 and the EC Alert systems to inform citizens of emergency situation.

Bachelor Gulch Village Association- Emergency Action Plan		
	User Group:	Responder
	Access Level:	
	Code / Title:	Community Evacuation Plan
	Authorized by:	
	Last Revision Date: April 01, 2009	FINAL

(2) Residents may receive notifications over their landlines from reverse 911 notification as well as cell phone, text, and email notifications from RedPhone and EC Alert

iv) Portable Programmable Message Boards/Signs

(1) Bachelor Gulch has use of portable programmable message boards which will be used as necessary to further provide communication support for evacuees as they leave the area

(a) Typically used to display Relocation Center(s) information

(b) Placed at the exit points from the designated preferred routes

v) Preprinted Evacuation Statements to the Public-Appendices

(1) Identification of affected area

(2) Relocation center address

(a) During extended evacuation time periods Eagle County Emergency services will designate local Public facilities or School buildings for relocation of guests and homeowners.

(b) Directions for how to receive update information on the evacuation and incident

Bachelor Gulch Village Association- Emergency Action Plan		
	User Group:	Responder
	Access Level:	
	Code / Title:	Community Evacuation Plan
	Authorized by:	
	Last Revision Date: April 01, 2009	FINAL

(3) List of items to bring with when evacuating such as prescription medications, eye glasses, contact information for relatives / friends, appropriate clothing (Appendix 4)

(4) Instructions for pet evacuation (see Appendix 5)

vi) Printed Direction Signs.

(1) Signs for emergency routes

(2) No entry signs

(3) "For Evacuation Information" Signs for 970-748-6925

vii) Public Address Systems on Emergency Vehicles

(1) Public Address system will be installed in one or more public safety vehicles to allow for drive by communication

(2) Public agency vehicles have PA systems installed

b) For Public Safety Agencies

i) Public Safety Department Radio System

ii) Shuttle Service Radio System

iii) Beaver Creek Mountain Radio System

iv) Inter-Agency Operability Radio Transmissions

v) Bachelor Gulch Public Safety patrol carries Eagle County 800 system radios. This allows such channels as Mutual Aid

Bachelor Gulch Village Association- Emergency Action Plan		
	User Group:	Responder
	Access Level:	
	Code / Title:	Community Evacuation Plan
	Authorized by:	
	Last Revision Date: April 01, 2009	FINAL

1 to be assigned during the event to ensure good communication between all agencies.

vi) Direct telephone contact (cell and landline) see Red Phone and EC Alert.

c) Alert Level of the Evacuation (primary message to the Public)

i) **Advisory** – *the potential for danger exists and a mandatory evacuation may be ordered, citizens should pay close attention to changing conditions involving the threat*

ii) **Warning** – *the potential for danger is high and the public is advised to evacuate the area until further notice*

iii) **Mandatory** – *there is an imminent danger to human life and property and the public must evacuate immediately*

7) Neighborhood Control Grids

a) Definition - A property falls within a specific Control Grid if the driveway from the property exits out onto a roadway within the geographical description of the identified Grid

b) Grid Descriptions

i) *Grid 1 – all properties that are located north of the top of Daybreak Ridge to the intersection of Elkhorn*

ii) *Grid 2 – all properties that are along Elkhorn*

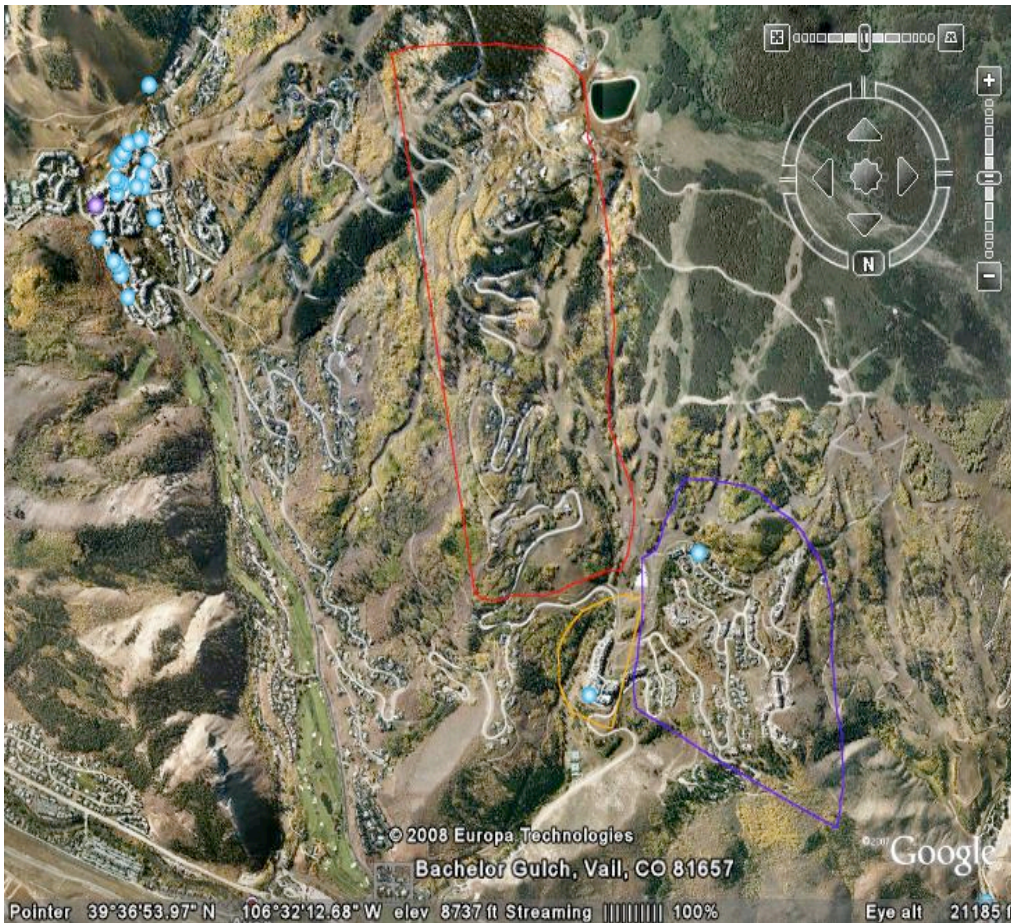
iii) *Grid 3 – all properties north of the top of Horizon to the intersection of Bachelor Ridge and Bear Paw – this includes Peak View*

Bachelor Gulch Village Association- Emergency Action Plan		
	User Group:	Responder
	Access Level:	
	Code / Title:	Community Evacuation Plan
	Authorized by:	
	Last Revision Date: April 01, 2009	FINAL

- iv) Grid 4 – all properties north of the intersection of Bachelor Ridge and Bear Paw to the intersection of Bachelor Ridge and Sky Watch Court – this includes all properties on Bear Paw, Hummingbird, and Sky Watch Court*
- v) Grid 5 – all properties north of the intersection of Bachelor Ridge and Sky Watch Court to the intersection of Bachelor Ridge and Daybreak Ridge – this includes all properties on Tall Timber*
- vi) Grid 6 – all properties accessed from Daybreak Ridge between the intersections of Elkhorn and Bachelor Ridge, and then north to the Bachelor Gulch Gate – this includes The Ritz Carlton Hotel, the Ritz Carlton Club, the Snow Cloud Lodge, the Anderson Cabin, and the Tennis Club*
- vii) Grid 7 – all properties north of the Bachelor Gulch Gate House to the Prater Road Rotary*
- viii) Grid 8 – all properties north of Prater Road and Village Road lying south of U.S. Hwy 6 (inclusive of all parking areas)*

Bachelor Gulch Village Association- Emergency Action Plan

	User Group:	Responder
	Access Level:	
	Code / Title:	Community Evacuation Plan
	Authorized by:	
	Last Revision Date: April 01, 2009	FINAL



Bachelor Gulch Grids

- c) Control Points – depending upon the Grid that is being evacuated
 - i) *Daybreak Ridge and Strawberry Park Road*
 - ii) *Daybreak Ridge and Elkhorn*
 - iii) *Bachelor Ridge and Horizon*

Bachelor Gulch Village Association- Emergency Action Plan		
	User Group:	Responder
	Access Level:	
	Code / Title:	Community Evacuation Plan
	Authorized by:	
	Last Revision Date: April 01, 2009	FINAL

iv) Bachelor Ridge and Skywatch Court

v) Daybreak Ridge – Bachelor Ridge - Bachelor Gulch Trail intersection

vi) Bachelor Gulch Trail at Gate House

vii) Bachelor Gulch Trail and Prater Road

viii) Prater Road and U.S. Hwy 6

d) Road / Street Control

i) Signage

(1) Evacuation Signs with directional arrows

(2) Evacuation Signs with Do Not Enter emblem

(3) Temporary use - by Public Safety Personnel

ii) Barriers

iii) Traffic Cones

iv) Staffed Control Points

8) Transportation

a) Personally Owned Vehicles (POVs)

i) In most cases civilians will be depended upon to use their own vehicles to self evacuate, however in the following cases POV's are not to be used –

Bachelor Gulch Village Association- Emergency Action Plan		
	User Group:	Responder
	Access Level:	
	Code / Title:	Community Evacuation Plan
	Authorized by:	
	Last Revision Date: April 01, 2009	FINAL

- (1) If the vehicles are inaccessible due to the hazard's location*
- (2) If driving the vehicle from its parked location out of the Control Grid(s) effected would require the operator to pass through the hazard area*
- (3) In these situations, instructions must be given to direct the owner(s) / driver(s) to the closest Pick Up Point for their evacuation by Shuttle Service*
- (4) If POVs are being used for evacuation, serious delays may occur at the front of lodging facilities as people attempt to load their possessions. Public Safety Officers and Hotel Security personnel may have to intercede to move people out quickly to save lives versus property*

b) Shuttle Service

- i) Bachelor Gulch has extensive transportation resources that would be used to evacuate homeowners and guests to the appropriate evacuation relocation center(s)*
- ii) Staging area*
 - (1) Main parking lot in Control Grid 8 by Public Safety Building*
 - (2) May be designated by the incident depending on the location of the hazard*
- iii) Forward Staging Areas*

Bachelor Gulch Village Association- Emergency Action Plan		
	User Group:	Responder
	Access Level:	
	Code / Title:	Community Evacuation Plan
	Authorized by:	
	Last Revision Date: April 01, 2009	FINAL

(1) Daybreak Ridge at Ritz

(2) Bachelor Trail at Gate House

iv) Special Events – event specific pick up points shall be established for any activity that involves more than 100 attendees (not including staff / employees)

(1) The Shuttle pick up and drop off points shall be used for Emergency Evacuation as well

(2) Notification of these pick up points must be given to the Public Safety Department prior to the start of any qualifying event

v) Emergency Evacuation Pick Up Points

(1) see Appendix 1 for locations by Grid

(2) signs shall be placed at these locations once this plan has been activated

c) Emergency Vehicles

i) only in extreme emergency situations as using these vehicles for the transportation of evacuees takes the responders off the line

ii) should be only to shuttle to other transportation resources, unless a medical injury is being treated

d) Primary Routes

i) Daybreak Ridge

Bachelor Gulch Village Association- Emergency Action Plan		
	User Group:	Responder
	Access Level:	
	Code / Title:	Community Evacuation Plan
	Authorized by:	
	Last Revision Date: April 01, 2009	FINAL

ii) Bachelor Ridge

iii) Bachelor Gulch Trail

iv) Prater Road

9) Rescue Situations

- a) Medical Emergencies shall be processed as routine EMS responses
- b) If Mass Casualties are present, the Medical Branch of the Unified Command system will establish the appropriate triage areas and procedures
- c) Entrapment Emergencies
 - i) Routine emergency response procedures shall be followed for any evacuees involved in entrapment situations*
 - ii) It is important for the Command Team to be cognizant of the resources required to perform entrapment rescues and the impact on resources no longer available to assist in the overall evacuation process*

10) Implementation of the Evacuation Plan

- a) Review Incident Assessment Results
- b) Establish the Alert Level of the Evacuation
 - i) Advisory*
 - ii) Warning*

Bachelor Gulch Village Association- Emergency Action Plan		
	User Group:	Responder
	Access Level:	
	Code / Title:	Community Evacuation Plan
	Authorized by:	
	Last Revision Date: April 01, 2009	FINAL

iii) Mandatory

c) Identify the Control Grids to be evacuated

i) Selection should be based on Incident Assessment with consideration for -

(1) most seriously exposed

(2) followed by highest number of population exposed

d) Identify the preferred route and alternate routes to be taken by evacuees from each Control Grid

i) Open controlled gates as applicable:

(1) Strawberry Park Road and Day Break Ridge Road

(2) Bachelor Gulch Guard House this location may need to be used to control traffic entering Bachelor Gulch. Additionally the gate would be a high point of contact for information. The BG gate is Bachelor Gulch Public Safety Dispatch Center and we can assume this phone will be inundated with guest and homeowner calls

(3) Bachelor Gulch Drive and Prater Road

ii) Post “Emergency Evacuation – Do Not Enter” signs facing out at each controlled gate

iii) Transmit the designated evacuation routes and approved “Relocation Centers” to all Public Safety Officers, emergency response personnel, and shuttle bus drivers involved in the evacuation process

Bachelor Gulch Village Association- Emergency Action Plan		
	User Group:	Responder
	Access Level:	
	Code / Title:	Community Evacuation Plan
	Authorized by:	
	Last Revision Date: April 01, 2009	FINAL

- (1) Temporary Signs should be deployed with directional arrows*
- (2) Do Not Enter Signs should be deployed at Control Points for effected Control Grids facing traffic that may be inbound to the affected area*
- iv) Assign Public Safety Officers or other emergency agency personnel to staff the Control Points within control grids to be evacuated*
 - (1) Position barriers at Control Points to be used to secure entry points to the effected Control Grids after evacuation has been completed*
 - (2) Position portable programmable message board traffic control signs with relocation center information at the following locations*
 - (a) Bachelor Gulch Trail and Prater Road*
 - (b) Bachelor Gulch Trail and Gate House*
 - (c) As required based on selected evacuation routes*
- v) Select the appropriate pre-written Evacuation Notice for the public or construct an ad-hoc statement / announcement*
- vi) Activate alerting systems and disseminate the evacuation announcement*

Bachelor Gulch Village Association- Emergency Action Plan		
	User Group:	Responder
	Access Level:	
	Code / Title:	Community Evacuation Plan
	Authorized by:	
	Last Revision Date: April 01, 2009	FINAL

vii)Begin traffic routing

- (1) Outbound civilian traffic shall drive on the right hand side of the roadway at all times, as in normal driving conditions.*
- (2) Inbound emergency vehicle traffic and shuttles shall drive on the right hand side of the roadway*
- (3) Outbound emergency vehicle traffic and shuttles shall drive on the right hand side of the roadway, unless traffic is backed up, at which point these vehicles will be allowed to drive in the left lane of outbound roadways with due regard to safety*
- (4) In extreme emergency situations where immediate evacuation is required, both lanes of roadways may be used for outbound civilian traffic, if the control points on the designated primary evacuation routes are staffed with personnel who can control the flow of traffic and return the use of the roadway to one lane of outbound traffic when emergency vehicles and shuttles need to gain inbound access.*
 - (a) In this situation, only one of the designated preferred routes should be used for two lane outbound traffic flow at a time*
 - (b) This practice may also be useful to evacuate one or two Control Grids that are the most immediately exposed, while maintaining standard traffic routing for the other Control Grids*

Bachelor Gulch Village Association- Emergency Action Plan		
	User Group:	Responder
	Access Level:	
	Code / Title:	Community Evacuation Plan
	Authorized by:	
	Last Revision Date: April 01, 2009	FINAL

viii) Evacuation of Non-Ambulatory Individuals

- (1) Notifications for the need to evacuate non-ambulatory individuals may be received via direct 911 emergency calls or via the Bachelor Gulch Public Safety Alerting System (RedPhone)*
- (2) Requests for assisted evacuation shall be compiled into lists, sorted by Control Grids with a copy remaining at the Command Post and/or dispatch center at all times*
- (3) The Command Structure shall create the necessary number of “Non-Ambulatory Response Groups” based on the number and locations of known assisted evacuations that need to be performed*
- (4) Each “Non-Ambulatory Response Group” shall be comprised of –*
 - (a) 5 emergency responders*
 - (b) 1 shuttle bus staffed by a driver and an EMT or above level EMS provider*
- (5) Assignments of the “list(s)” of required assisted evacuations shall be based on –*
 - (a) Most seriously exposed*
 - (b) Followed by highest number of population exposed*
- (6) Upon receipt of a Control Grid specific assisted evacuation list, the “Non-Ambulatory Response Group”*

Bachelor Gulch Village Association- Emergency Action Plan		
	User Group:	Responder
	Access Level:	
	Code / Title:	Community Evacuation Plan
	Authorized by:	
	Last Revision Date: April 01, 2009	FINAL

shall start at the furthest address from safe haven and progress through the list to the address closest to a safe haven for those being assisted

- (7) The emergency response personnel shall make the removal of the individuals requiring assistance and place them on the shuttle bus*
- (8) The shuttle bus shall be facing the egress direction prior to placing the first evacuee on the bus to avoid having to turn around with a full load of evacuees*
- (9) The shuttle bus shall follow the emergency responders and it is under the direction and control of the senior emergency services officer in charge of the “Non-Ambulatory Response Group”*
- (10) The officer in charge of a “Non-Ambulatory Response Group” shall notify Command of the need for another empty shuttle bus prior to the current one being full so as to ensure that the Group is continuously performing assisted evacuations and not waiting for additional transportation unit(s)*
- (11) The officer in charge shall advise Command of when all the evacuees on the assigned list have been removed and request an additional list or reassignment*
- (12) Shuttle Bus drivers shall report into their dispatch system the number of assisted evacuees being removed on each trip out of the effected Control Grids.*

Bachelor Gulch Village Association- Emergency Action Plan		
	User Group:	Responder
	Access Level:	
	Code / Title:	Community Evacuation Plan
	Authorized by:	
	Last Revision Date: April 01, 2009	FINAL

(a) This information shall be compiled and forwarded to the Command Post for the incident via the Bachelor Gulch Public Safety Director or his designee

(b) This data shall be compared to the compiled lists ascertained by the 911 calls for assistance and from the requests received via the Bachelor Gulch Alerting System (RedPhone) to provide an audit trail for accountability of the non-ambulatory individuals who required assistance in evacuating the area

(13) Assignment of a “Non-Ambulatory” coordinator shall be made for each Relocation Center that receives individuals that were evacuated via this process

(a) Upon receiving non-ambulatory individuals, the assigned coordinator at each Relocation Center shall begin the process of contacting family members / friends / associates of the individual who can assist the person in returning to their residence after the evacuation is over, or in transferring the individual to other accommodations outside of the Relocation Center

(b) The coordinator will notify the Command Post if there are any non-ambulatory individuals who are going to require assistance in returning to their residences after the evacuation order has been rescinded so that the Command Team can assign the necessary number of “Non-Ambulatory Response Groups” to remain and assist with transportation from the Relocation Center(s) back to the residences

Bachelor Gulch Village Association- Emergency Action Plan		
	User Group:	Responder
	Access Level:	
	Code / Title:	Community Evacuation Plan
	Authorized by:	
	Last Revision Date: April 01, 2009	FINAL

ix) Initiate Shuttle Bus Evacuation Process

- (1) Stage shuttle buses in parking lot in Control Grid 8*
- (2) Move required number of shuttle buses to the forward staging area as applicable to the incident and with due regard to the safety of the drivers*
- (3) Assign shuttle bus drivers to the Control Grid(s) as required by the incident and identify the approved Relocation Center that they are report to after completing their route*
- (4) Provide shuttle bus drivers with the approved list of Pick Up Points for the Control Grid(s) that they will be operating in*
- (5) The shuttle bus shall be facing the egress direction prior to placing the first evacuee on the bus to avoid having to turn around with a full load of evacuees*
- (6) Begin the evacuation pick up process by starting all routes at the furthest approved Pick Up Point from safe haven on the assigned route and progress through the approved Pick Up Point list until exiting the assigned Control Grid*
- (7) All evacuees are only to be disembarked at approved Relocation Centers*
- (8) Initiate "anti-looting" patrols through out evacuation area*

Bachelor Gulch Village Association- Emergency Action Plan		
	User Group:	Responder
	Access Level:	
	Code / Title:	Community Evacuation Plan
	Authorized by:	
	Last Revision Date: April 01, 2009	FINAL

11) Relocation Centers

a) Internal

i) For incidents that do not involve the evacuation of the Control Grid for the following locations, they may be used as Relocation Centers

(1) Bachelor Gulch Club

(2) Vilar Center

(3) Park Hyatt

(4) Ritz

ii) Coordinate with site management to ensure access to rest room facilities, drinking water, and other shelter requirements as needed based on duration and environmental conditions

iii) Internal Relocation Centers are only for use for individuals who do not have medical needs

iv) If there is a possibility that the emergency may spread to the Grid(s) where internal relocation site(s) are located, it is recommended to use external sites from the start of the process

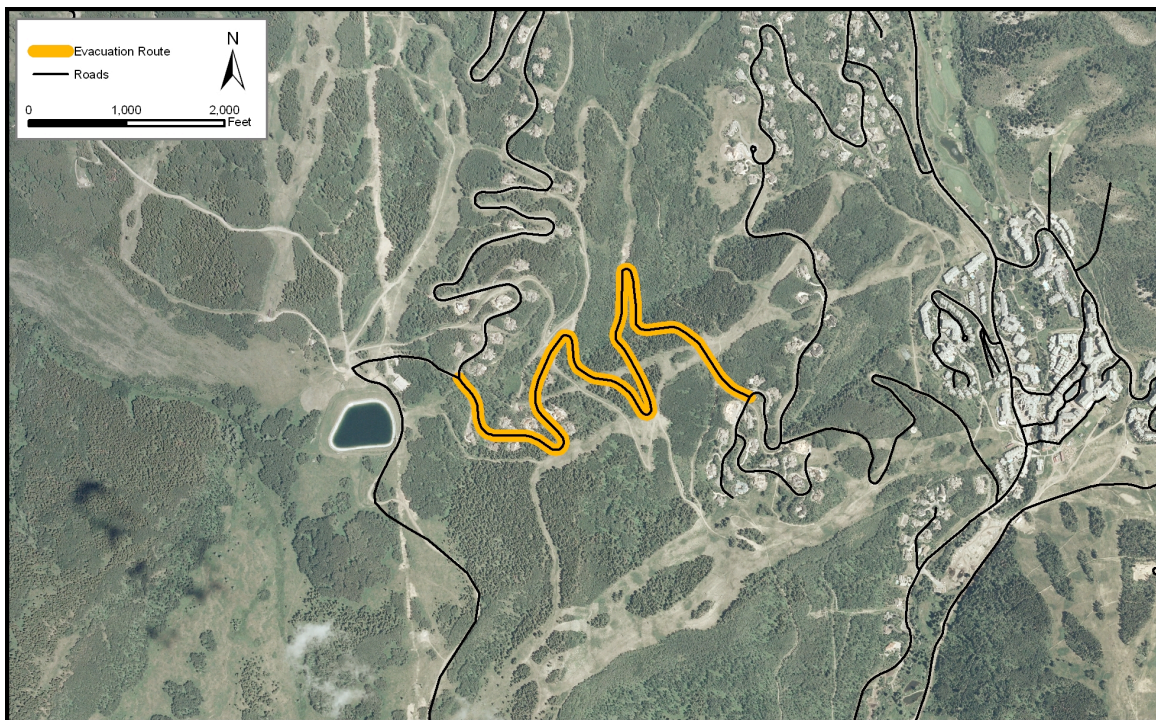
b) External – as directed by government agencies

Bachelor Gulch Village Association- Emergency Action Plan

	User Group:	Responder
	Access Level:	
	Code / Title:	Community Evacuation Plan
	Authorized by:	
	Last Revision Date: April 01, 2009	FINAL

12) Secondary Evacuation Routes

- a) Strawberry Park Construction Road
- b) Horizon Pass
- c) Piece of Cake Mountain Road

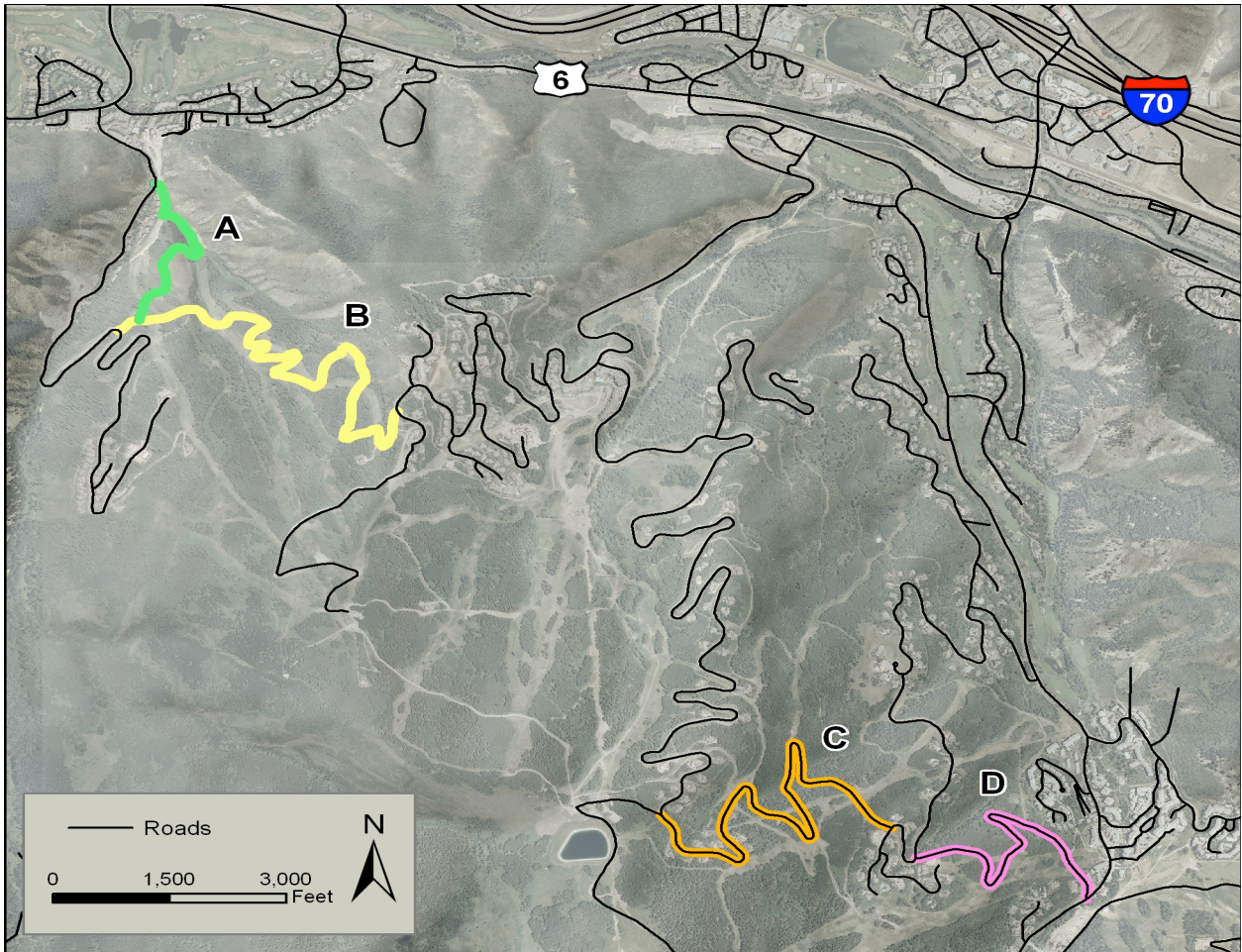


Strawberry Park to Daybreak Ridge: It is possible to escape from Bachelor Gulch to Beaver Creek to US 6 or I 70 by using the existing service road that connects from Daybreak Ridge Road to the Strawberry Park community in Bachelor Gulch. This road is asphalt and is passable by all vehicles including passenger cars; however it currently has a gate that blocks access at the upper (western) end.

Bachelor Gulch Village Association- Emergency Action Plan

	User Group:	Responder
	Access Level:	
	Code / Title:	Community Evacuation Plan
	Authorized by:	
	Last Revision Date:	FINAL
	April 01, 2009	

This gate is controlled by the Bachelor Gulch Public Safety department in conjunction with the Bachelor Gulch Public Safety department.



Cresta Road to Bachelor Gulch: It is possible to escape from the southern end of Arrowhead to Bachelor Gulch by using an existing service road connecting Cresta Road to Horizon Lane. This road is

Bachelor Gulch Village Association- Emergency Action Plan		
	User Group:	Responder
	Access Level:	
	Code / Title:	Community Evacuation Plan
	Authorized by:	
	Last Revision Date: April 01, 2009	FINAL

dirt, but is passable by most vehicles in dry conditions. The road is of adequate width and generally has good clearance; however this route should be inspected on an annual basis for adequate surface condition and removal of any potentially hazardous vegetation. This is a high priority project because it provides a secondary escape route for the Trailside and Cresta communities should Cresta Road become impassable due to heat and smoke.

Cresta Road Bypass: This existing dirt service road provides a connection between the northern side of the Cresta community and Escape Route B. The road is of adequate width and generally has good clearance; however this route should be inspected on an annual basis for adequate surface condition and removal of any potentially hazardous vegetation. This is a high priority project because it provides a secondary escape route for the Cresta community should Cresta Road become impassable due to heat and smoke.

Bachelor Gulch Village Association- Emergency Action Plan		
	User Group:	Responder
	Access Level:	
	Code / Title:	Community Evacuation Plan
	Authorized by:	
	Last Revision Date: April 01, 2009	FINAL

13) Rescinding of Evacuation Order

a) Notifications

i) *The follow entities shall be notified immediately upon the rescinding of the evacuation order*

(1) *Bachelor Gulch Public Safety Director*

(2) *Village Operation Manager on Duty*

(3) *Mountain Operation Manager on Duty*

(4) *All off duty Public Safety Officers – report for duty*

(5) *Executive Director of the Bachelor Gulch Village Association*

(6) *General Manager of the Bachelor Gulch Metro District*

(7) *Eagle County Sheriff's Office*

(8) *Eagle River Fire Protection District*

(9) *Eagle County Emergency Management Agency*

(10) *Eagle County Health Service District*

(11) *Shuttle Transportation Service*

(12) *Advise all on duty Public Safety Officers to prepare the Emergency Evacuation signs and equipment required to implement this procedure*

Bachelor Gulch Village Association- Emergency Action Plan		
	User Group:	Responder
	Access Level:	
	Code / Title:	Community Evacuation Plan
	Authorized by:	
	Last Revision Date: April 01, 2009	FINAL

(13) *Relocation Centers*

(14) *Activate all communication systems that were used for notification of the public and distribute the rescinding order and associated information*

ii) *Print and distribute any communications that may be relevant to reoccupation of the evacuated areas*

(1) *signs and symptoms of exposure*

(2) *advisories regarding future activity to address the emergency situation*

(3) *contact information if the public has questions on the incident*

(4) *overview of the nature of the incident that caused the evacuation*

(5) *Distribution points*

(a) *Relocation Centers*

(b) *Inbound Guard Houses / Check points*

(c) *On shuttle buses*

iii) *Transportation –Return of Evacuees*

(1) *Identify return transportation routes if any roadways are still closed or under the control of emergency service personnel*

Bachelor Gulch Village Association- Emergency Action Plan		
	User Group:	Responder
	Access Level:	
	Code / Title:	Community Evacuation Plan
	Authorized by:	
	Last Revision Date: April 01, 2009	FINAL

- (2) Stage shuttle buses at Relocation Centers*
- (3) Identify for the evacuees which shuttle bus will be returning to their neighborhood with signage*
- (4) Assign shuttle buses to specific Control Grids and make sure drivers advise all passengers as to what neighborhood / streets they are going to and the location of the drop off points (same as pick up points) where they will be stopping and letting passengers off of the bus*
- (5) Non-Ambulatory coordinators shall ensure that any evacuee who need assistance returning to their residence is accounted for and that acceptable transportation is arranged for this individual*
- (6) Road signs should be posted for any necessary control factors to avoid the public returning to areas that are still under the control of emergency service personnel*
- (7) Remove all emergency evacuation signage*
- (8) Patrol area for citizens who need assistance after returning to their residences*
 - (a) lock outs*
 - (b) missing persons from their family or guests*
 - (c) vandalism / looting*
 - (d) damage to their structures*
 - (e) pet issues*

Bachelor Gulch Village Association- Emergency Action Plan

	User Group:	Responder
	Access Level:	
	Code / Title:	Community Evacuation Plan
	Authorized by:	
	Last Revision Date: April 01, 2009	FINAL

Bachelor Gulch Village Association- Emergency Action Plan		
	User Group:	Responder
	Access Level:	
	Code / Title:	Community Evacuation Plan
	Authorized by:	
	Last Revision Date: April 01, 2009	FINAL

Appendix 1

Control Grid Pick Up Points

Control Grid 1

Entrance to ElkHorn Drive

Control Grid 2

Entrance to ElkHorn Drive

Control Grid 3

Horizon and Peak View
Bachelor Ridge and Horizon

Control Grid 4

Bachelor Ridge and Hummingbird
Bachelor Ridge and Skywatch Court

Control Grid 5

Bachelor Ridge and Tall Timber
Bachelor Ridge and Buckhorn Lane
Bachelor Ridge and area by Ritz-Carlton Club

Control Grid 6

Daybreak Ridge and Snow Cloud Lodge
Daybreak Ridge and Bachelor Ridge
Bachelor Gulch Trail and Tennis Club

Control Grid 7

Bachelor Gulch Trail and Gate House
Bachelor Gulch Trail and The Tarnes
Bachelor Gulch Trail and Prater Road

Control Grid 8

Bachelor Gulch Public Safety Offices

Bachelor Gulch Village Association- Emergency Action Plan		
	User Group:	Responder
	Access Level:	
	Code / Title:	Community Evacuation Plan
	Authorized by:	
	Last Revision Date: April 01, 2009	FINAL

Appendix 2

Sample Evacuation Statement

The Bachelor Gulch Public Safety Department is issuing an Evacuation {Advisory} {Warning} {Mandatory Order} for people located in {Identified Control Grids with their definitions} due to {identify hazardous situation}.

Approved Evacuation Routes include {list the preferred roads and routes} and the approved Relocation Center(s) for this emergency are {identify site and address}.

For further information please monitor {Cable TV channel}, listen for your telephone if you are registered with the Bachelor Gulch Public Safety Alerting System, and bulletins at the Relocation Center(s).

You will be notified in the same manner when we rescind the evacuation {Advisory} {Warning} {Mandatory Order}.

Bachelor Gulch Village Association- Emergency Action Plan		
	User Group:	Responder
	Access Level:	
	Code / Title:	Community Evacuation Plan
	Authorized by:	
	Last Revision Date: April 01, 2009	FINAL

Appendix 3

Description of the alert notification levels

Advisory – the potential for danger exist and a mandatory evacuation may be ordered, citizens should pay close attention to changing conditions involving the threat

Warning – the potential for danger is high and the public is advised to evacuate the area until further notice

Mandatory – there is an imminent danger to human life and property and the public must evacuate immediately

Bachelor Gulch Village Association- Emergency Action Plan		
	User Group:	Responder
	Access Level:	
	Code / Title:	Community Evacuation Plan
	Authorized by:	
	Last Revision Date: April 01, 2009	FINAL

Appendix 4

Items to Bring with you to a Relocation Center

Keys for re-entry to your residence

Medicine / Prescriptions

Eye wear – prescription / reading / sun glasses

Identification (preferably a government issued photo ID)

Extra clothes (at least one change) – seasonally appropriate

Personal hygiene items (deodorant, toothbrush, tooth paste)

Feminine supplies

Special needs of the very young or elderly family members

Important contact numbers / information

Financial resources (cash/travelers checks/bank account information)

Insurance information

On the government web site www.ready.gov there is a good check off list on how to be prepared for an emergency and evacuations, please refer to this list.

Bachelor Gulch Village Association- Emergency Action Plan		
	User Group:	Responder
	Access Level:	
	Code / Title:	Community Evacuation Plan
	Authorized by:	
	Last Revision Date: April 01, 2009	FINAL

Appendix 5

Pet Evacuation Procedures

Take a collar and leash

Make sure your pet is wearing identification

Have copies of vaccination records

Take 3 days worth of food and water

Bring any pet medication

Bring a picture of your pet (with you if possible)

Take bedding/blanket and toys with you

Have a travel carrier / crate for your pet too

Review Pet Emergency Planning - www.ready.gov